

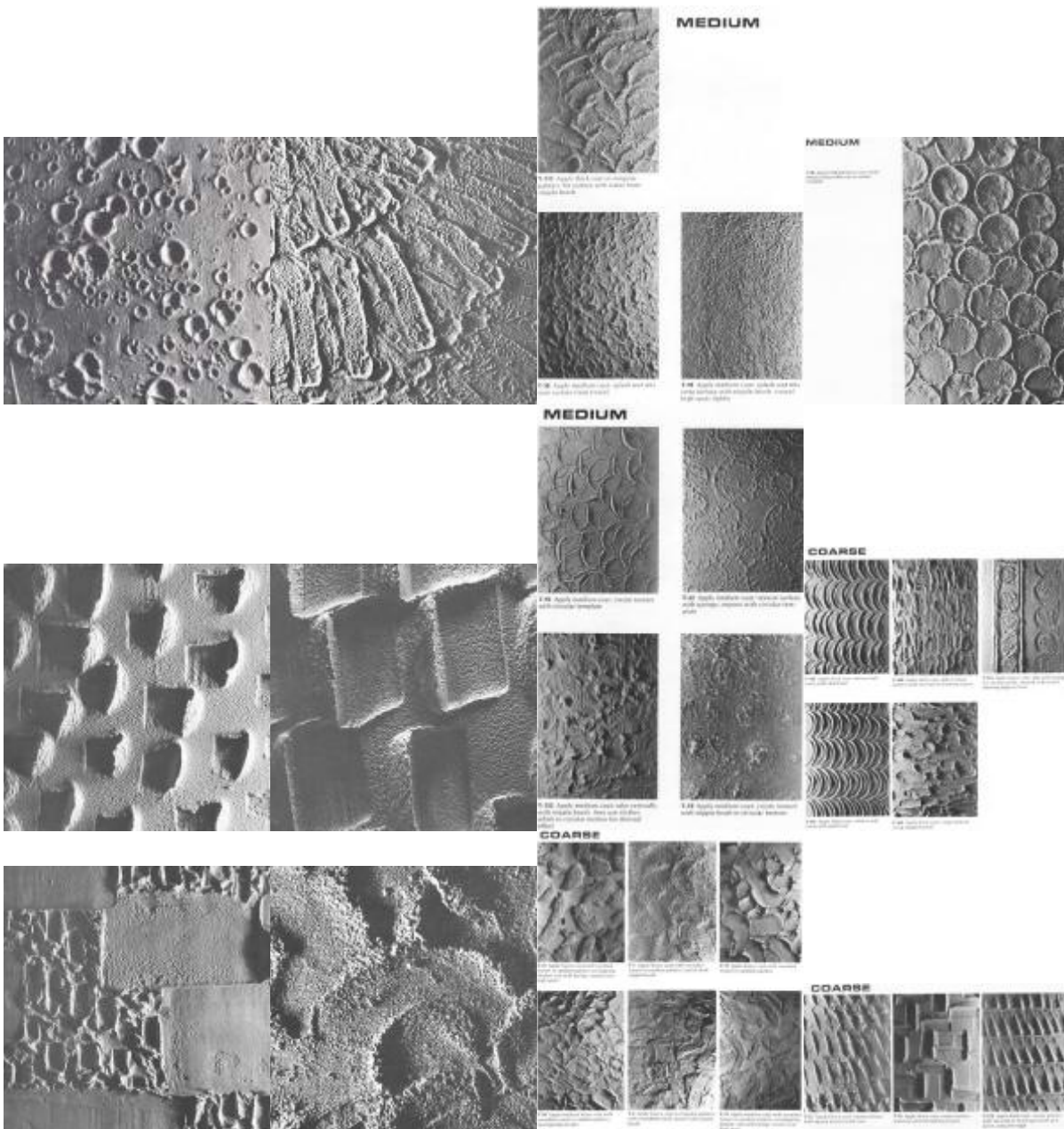


WCB
WALL AND CEILING BUREAU

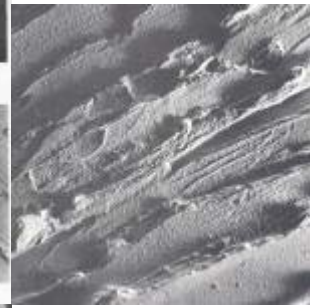
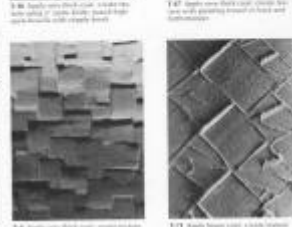
5726 Sonoma Drive
Pleasanton, CA 94566
Phone: 925.600.0475
Fax: 925.600.0618

TECHNICAL BULLETIN

Exterior Three Coat Texture Photos



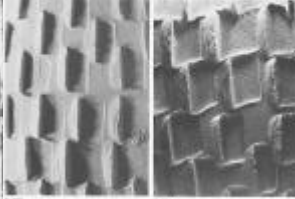
COARSE



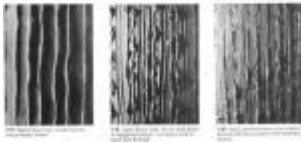
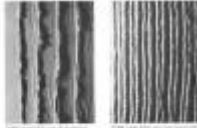
COARSE

1.00 Apply very heavy coat - create the look with vertical of heading toward

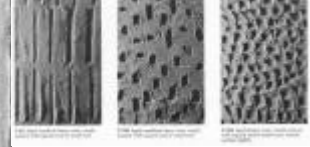
Notes: Special effects are possible by varying lighting positions



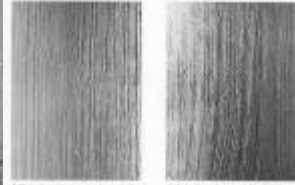
COARSE



MEDIUM

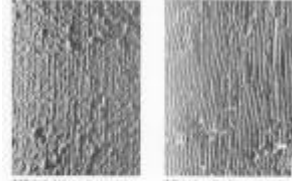


MEDIUM



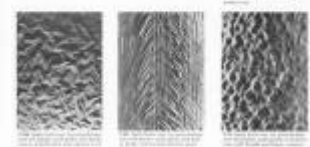
1.00 Apply medium coat - create the look with vertical of heading toward

1.01 Apply medium coat - create the look with vertical of heading toward

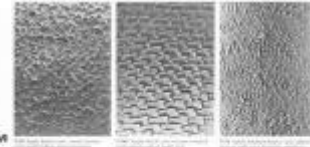


MEDIUM

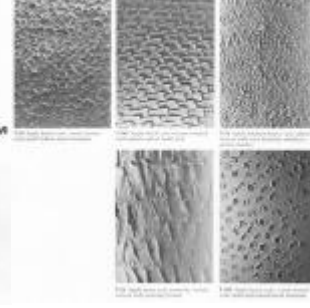
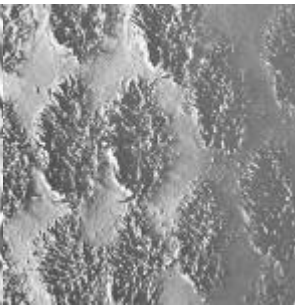
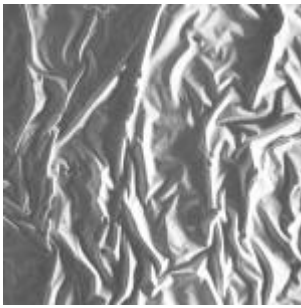
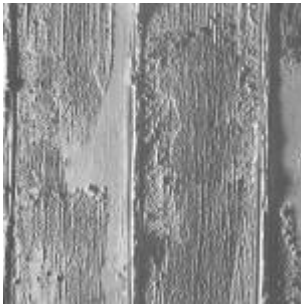
MEDIUM

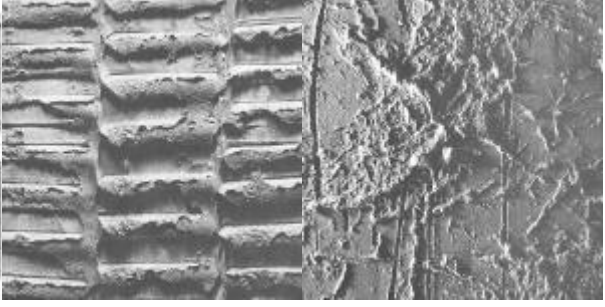
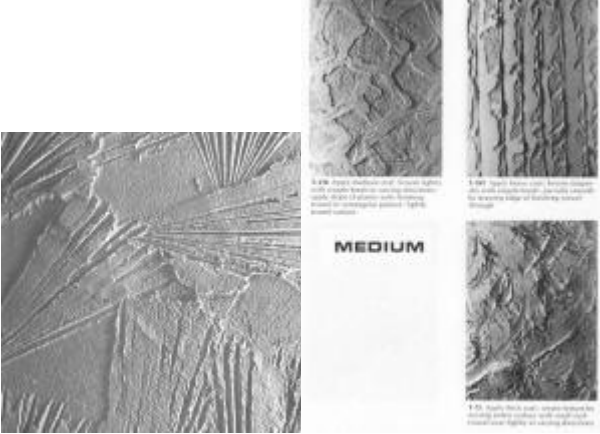
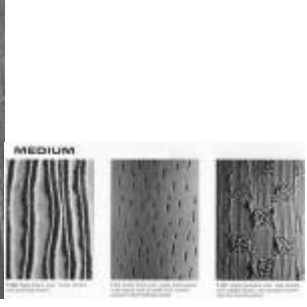
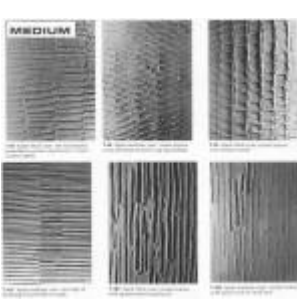
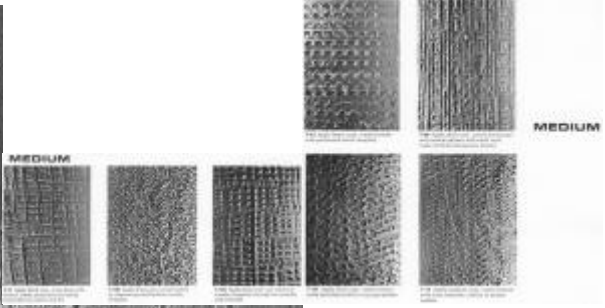
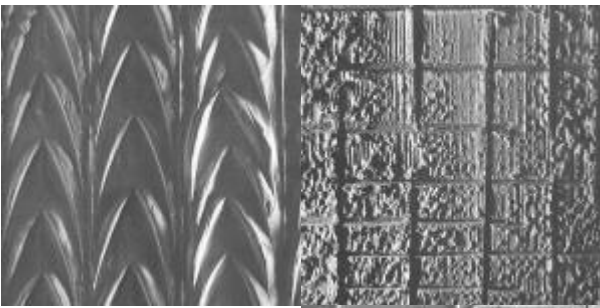
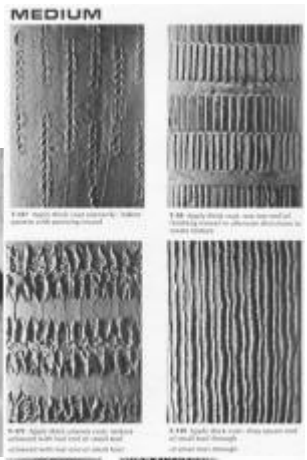
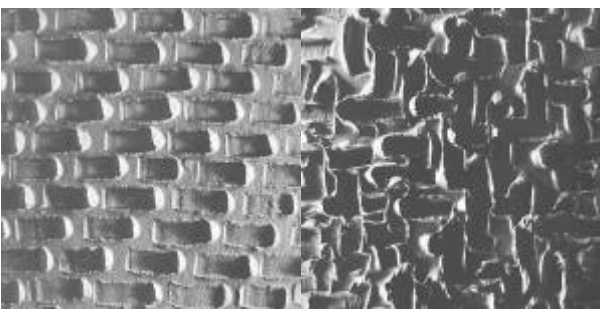


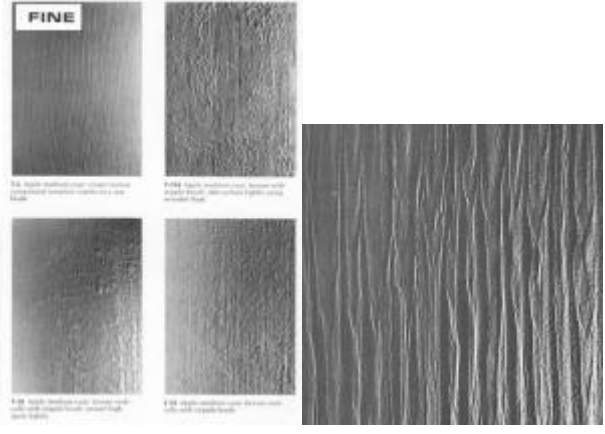
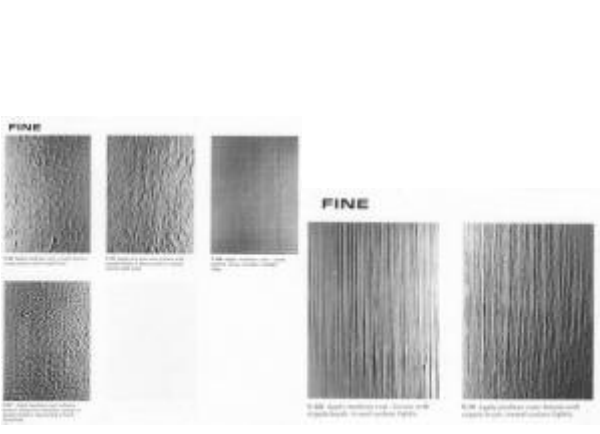
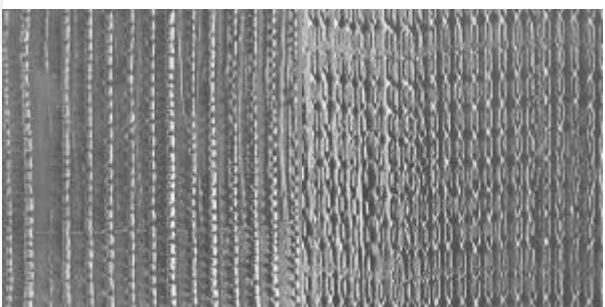
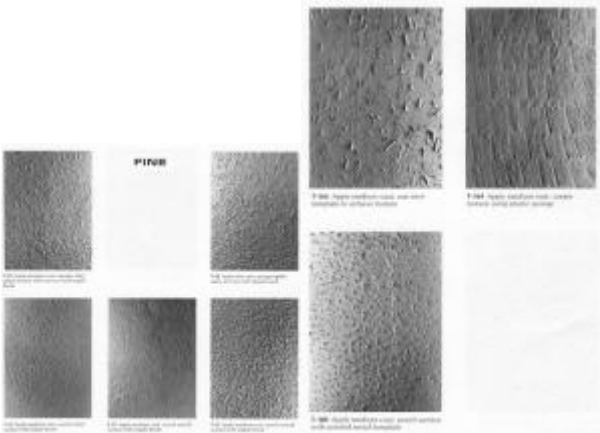
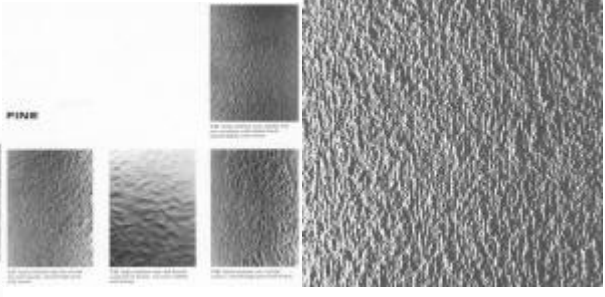
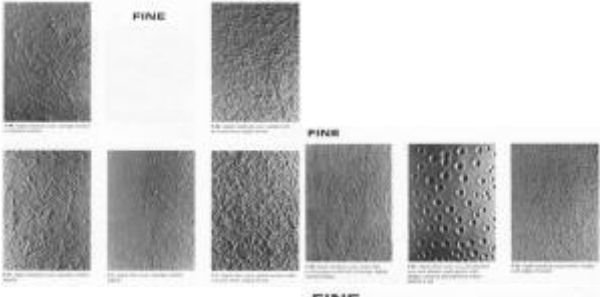
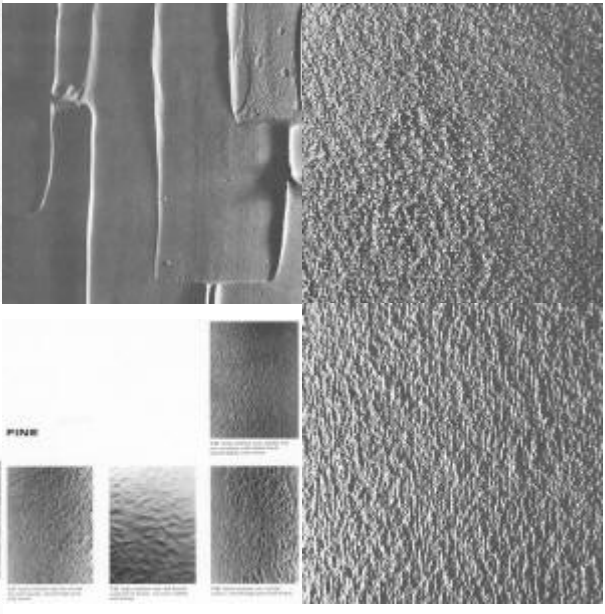
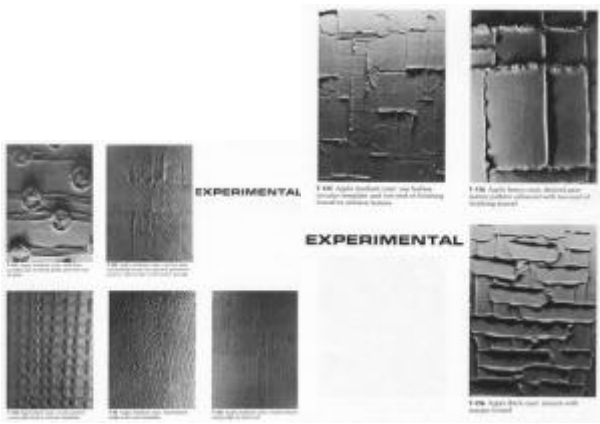
MEDIUM



MEDIUM









PINE
Handmade "Pine" texture

MEDIUM

1/2" Aggregates, medium size, 20mm max
with 100% sand (100% with edge of
finishing trowel)

3/4" Aggregates, medium size, 20mm max
with 100% sand (100% with edge of
finishing trowel)

MARBLECRETE
Handmade "Marblecrete" texture

1/2" Aggregates, medium size, 20mm max
with 100% sand (100% with edge of
finishing trowel)